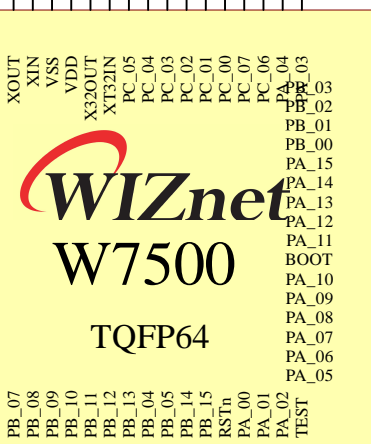


Optional\_I2C\_SCL0  
Optional\_I2C\_SDA0  
Optional\_SPI\_SSEL0  
Optional\_SPI\_SCLK0  
Optional\_SPI\_MISO0  
Optional\_SPI\_MOSI0

PC_08	STATUS_LED0
PC_09	STATUS_LED1
PC_10	U_TXD2
PC_11	U_RXD2
PC_12	Expansion_GPIO_D
PC_13	Expansion_GPIO_C
PC_14	Expansion_GPIO_B
PC_15	Expansion_GPIO_A
PD_00	CRS
PD_01	RXDV
PD_02	RXD0
PD_03	RXD1
PD_04	RXD2
PD_06	RXD3

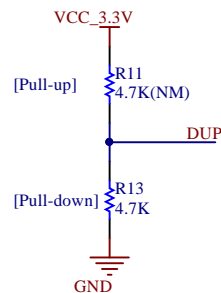


PA_03	PB_03
PA_02	PB_02
PA_01	PB_01
PA_00	PB_00
PA_15	PA_14
PA_14	PA_13
PA_13	PA_12
PA_12	PA_11
PA_11	PA_10
PA_10	PA_09
PA_09	PA_08
PA_08	PA_07
PA_07	PA_06
PA_06	PA_05

For Serial Flash Pins

MDIO(PB\_14),MDC(PB\_15) pin is should be handled as GPIOs.

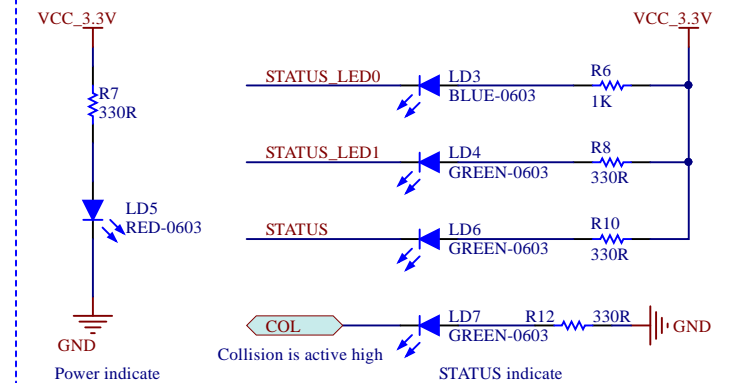
PA\_00 is PHY LINK check pin(input). This pin checks PHY link from peer  
This pin should be connected to the LINK status signal of the RJ-45.




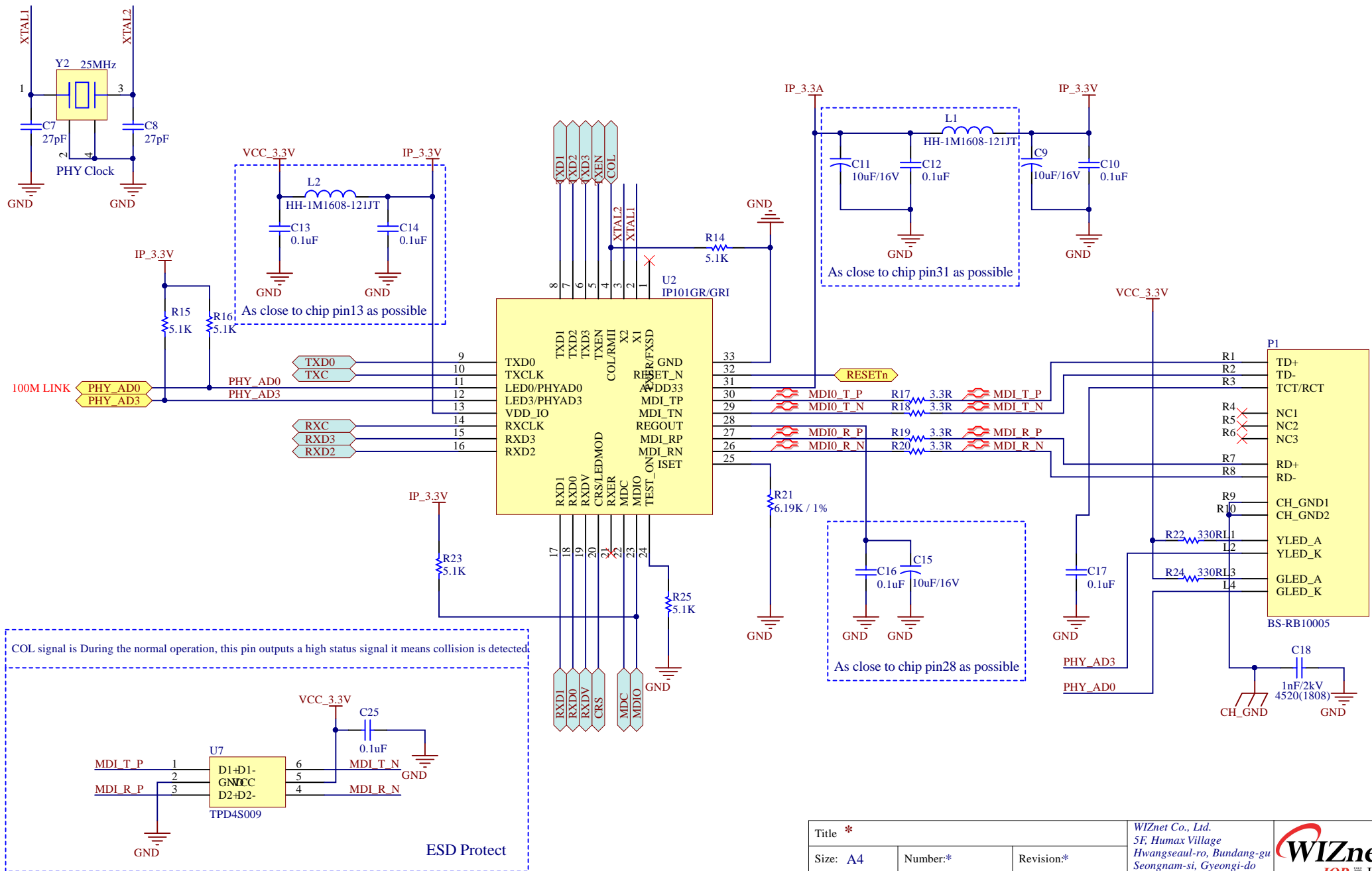
To use Half mode, you must set up pull up.  
To use Full mode, you must set up pull down.(Default)


There is no pull-up or pull-down in the circuit, make sure W7500 internal register is set as below  
1. Set as GPIO (Alternative function)  
2. Set as Input pin. (IE in PADCON)  
3. Set as Pull up or pull down. (PADCON)

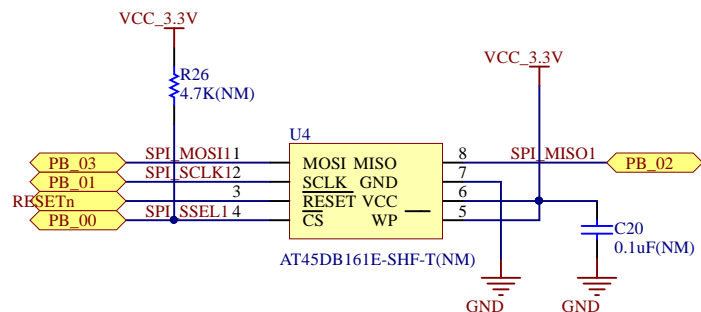
For more information, refer to the W7500 reference manual.



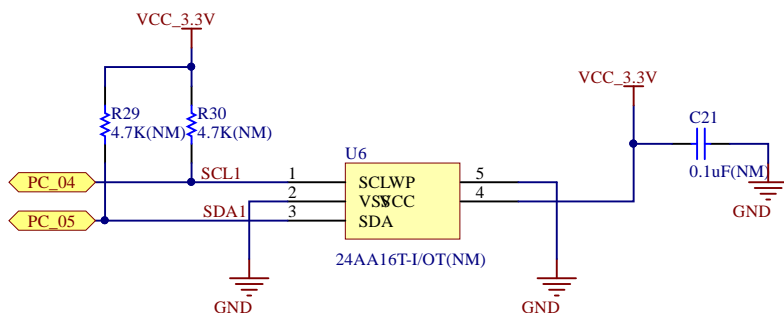
Title *			WIZnet Co., Ltd. 5F, Humax Village Hwangseaul-ro, Bundang-gu Seongnam-si, Gyeonggi-do South Korea		
Size: A4	Number:*	Revision:*			
Date: 2017-12-27			Sheet* of *		
Team: Team Wiki		Drawn By: Edward			



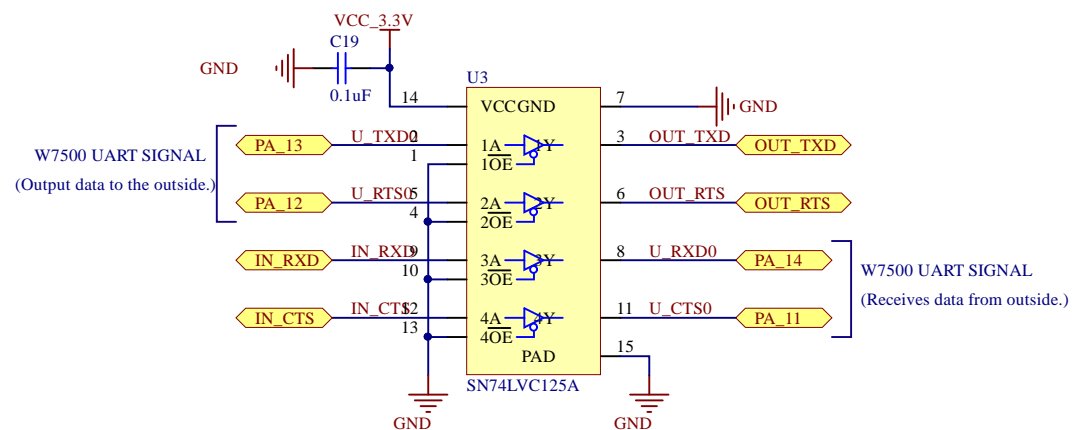
Title *			WIZnet Co., Ltd. 5F, Humax Village Hwangseaul-ro, Bundang-gu Seongnam-si, Gyeonggi-do South Korea		
Size: A4	Number:*	Revision:*			
Date: 2017-12-27			Sheet* of *		
Team: Team Wiki		Drawn By: Edward			



Serial Data Flash(Not Mount)

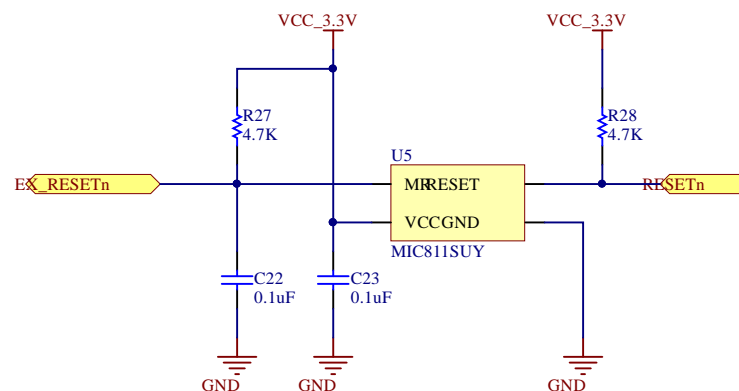


EEPROM(Not Mount)




The buffer is used for impedance separation purposes.

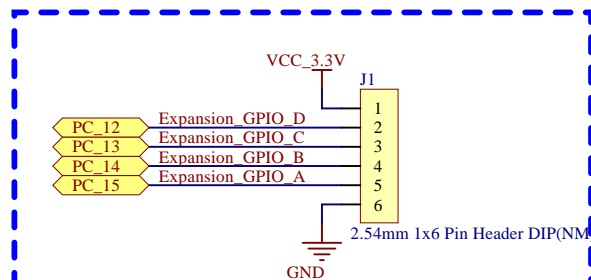
UART CONVERSION



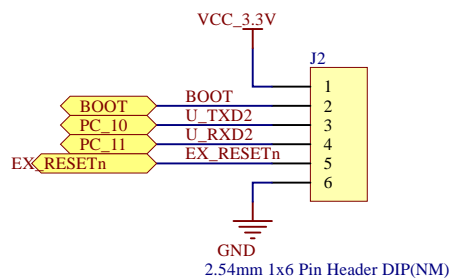
RESET

This page bold dash line is NM(Not Mount)

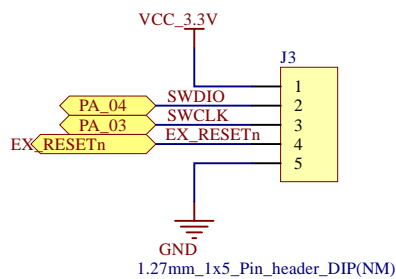
Title *			WIZnet Co., Ltd. 5F, Humax Village Hwangseaul-ro, Bundang-gu Seongnam-si, Gyeonggi-do South Korea	
Size: A4	Number:*	Revision*		
Date: 2017-12-27	Sheet* of *			
Team: Team Wiki	Drawn By: Edward			



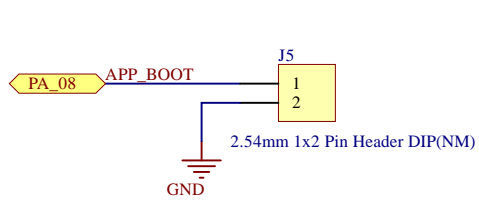
Expansion GPIO(Not Mount)



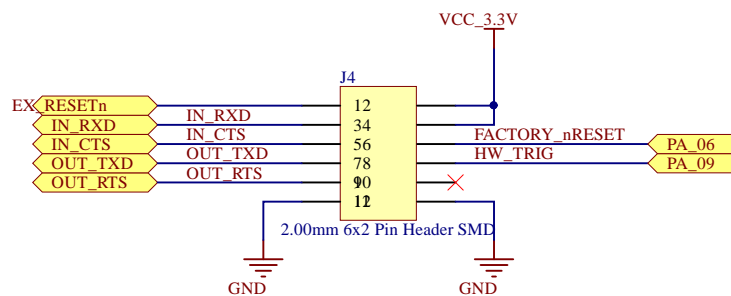
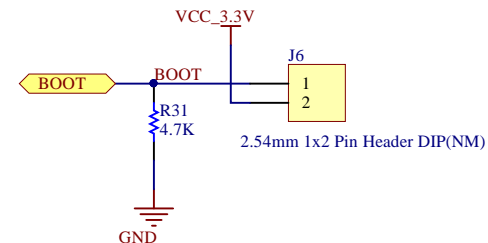
ISP Debug Port(Not Mount)



JTAG(Not Mount)




Control Switch



Pinout

This page bold dash line is NM(Not Mount)

Title *			WIZnet Co., Ltd. 5F, Humax Village Hwangseaul-ro, Bundang-gu Seongnam-si, Gyeonggi-do South Korea		
Size: A4	Number:*	Revision:*			
Date: 2017-12-27	Sheet* of *				
Team: Team Wiki		Drawn By: Edward			