

WIZ550web TFTP를 이용한 펌웨어 업로드하기 (WIZ550web TFTP Upload)

1 TFTP 서버 프로그램 다운로드

(TFTP Server Program Download)

www.tftp-server.com

WinAgents TFTP Server for Windows is a full-featured TFTP server for Windows. WinAgents TFTP Server runs as a background task and doesn't require permanent attendance. It has been originally designed to work in 24x7 background operation mode. Using WinAgents TFTP Server, you can make reserve copies of device settings, update flash images, store sound files for IVR systems and perform other essential operations.

[Why WinAgents TFTP Server is better? Learn more...](#)

[Download WinAgents TFTP Server Now!](#)

Key features of WinAgents TFTP Server

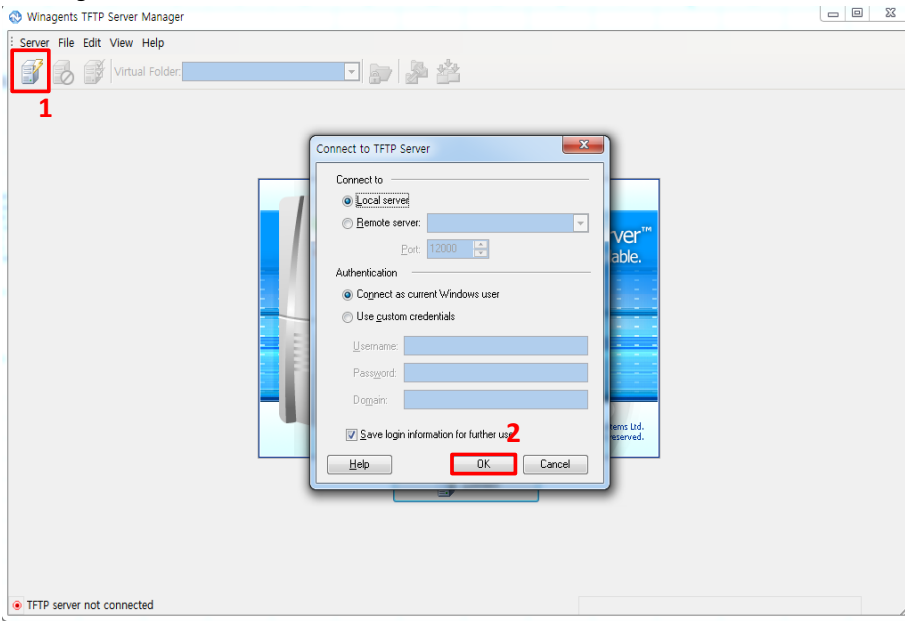
- Platform: Windows 2000/XP/2003/**Vista/2008/7**. TFTP Server is running as background task.
- Implemented as a system Windows service

[Support](#)
[Version History](#)
[About](#)

TFTP Server Help
[Overview](#)
[TFTP Protocol](#)
[Server Components](#)
[TFTP Service](#)
[Server Manager](#)
[Connecting](#)
[Server Settings](#)

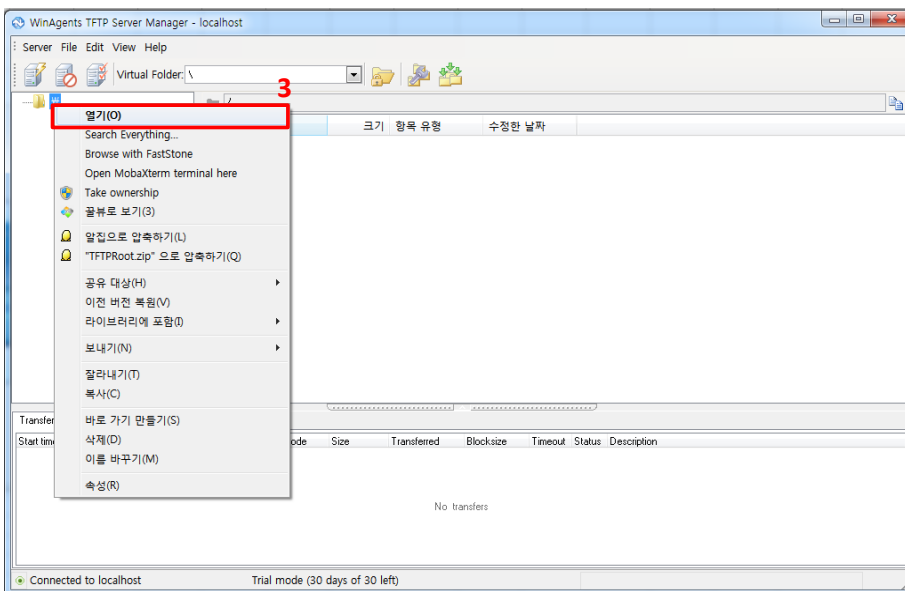
2 TFTP 서버 실행

(Running the TFTP server)

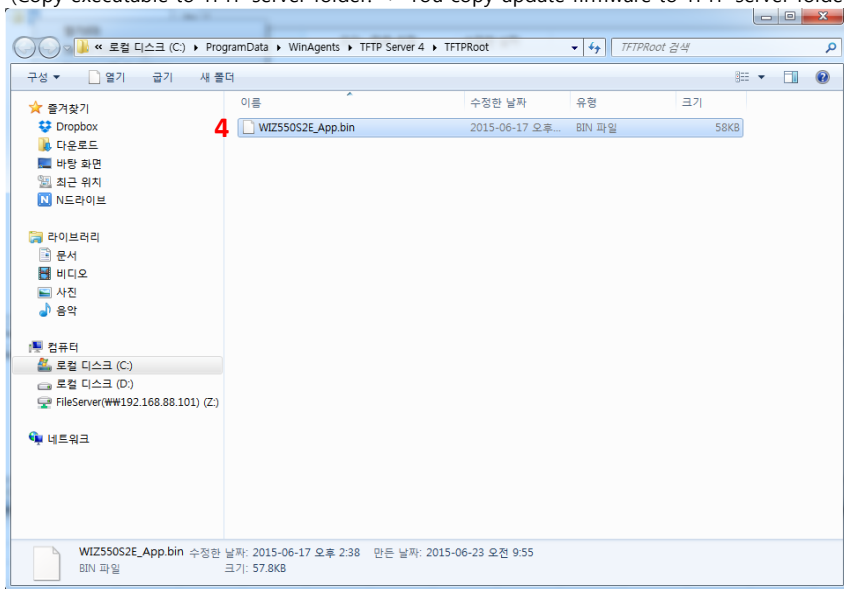


3 서버 폴더 열기(마우스 오른쪽 클릭후 열기) -> 열기를 누르면 TFTP서버 폴더가 열린다.

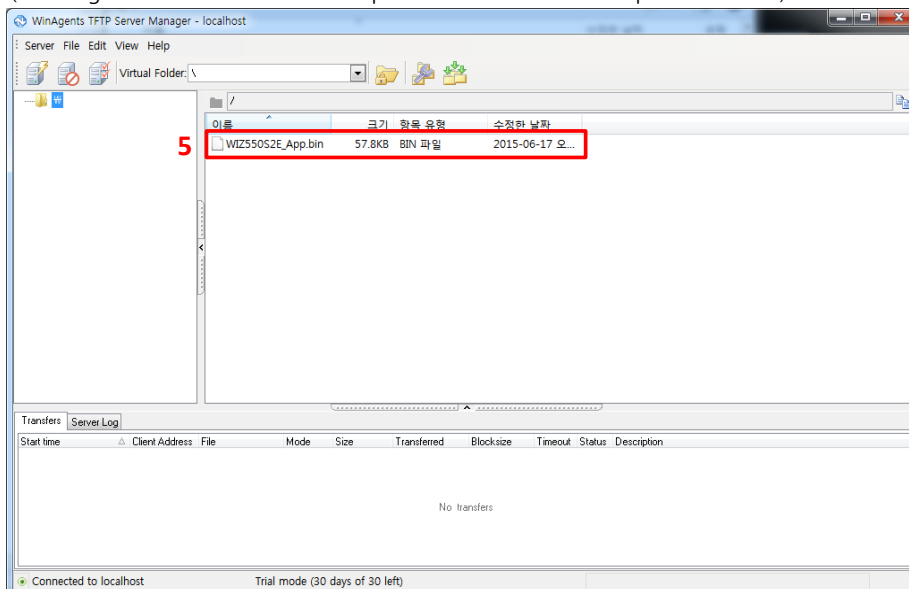
(Open the server folder (After mouse right button click) -> It is open the TFTP server folder)



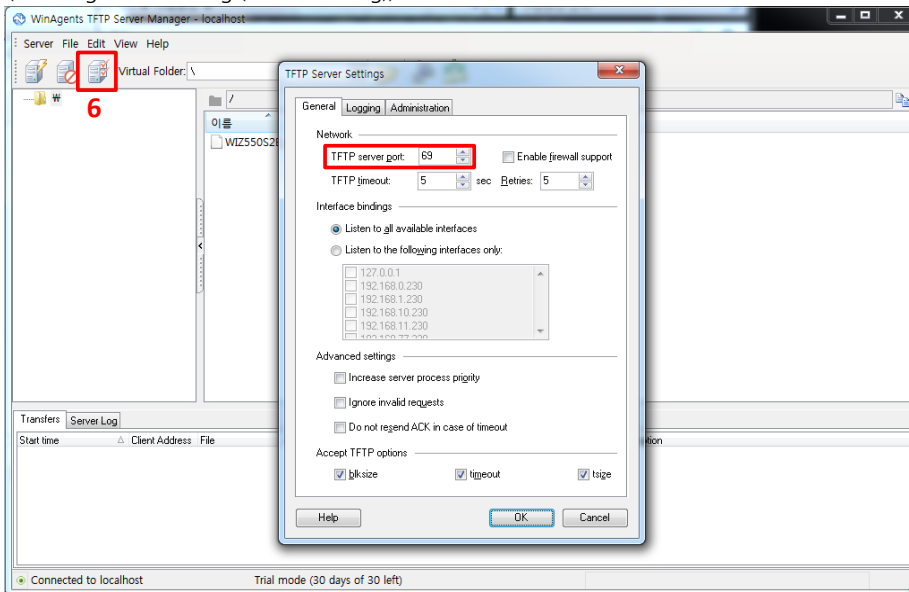
4 실행파일 TFTP 서버 폴더에 복사 -> 업데이트 하고자하는 F/W를 TFTP 서버 폴더에 복사한다.
(Copy executable to TFTP server folder. -> You copy update firmware to TFTP server folder)



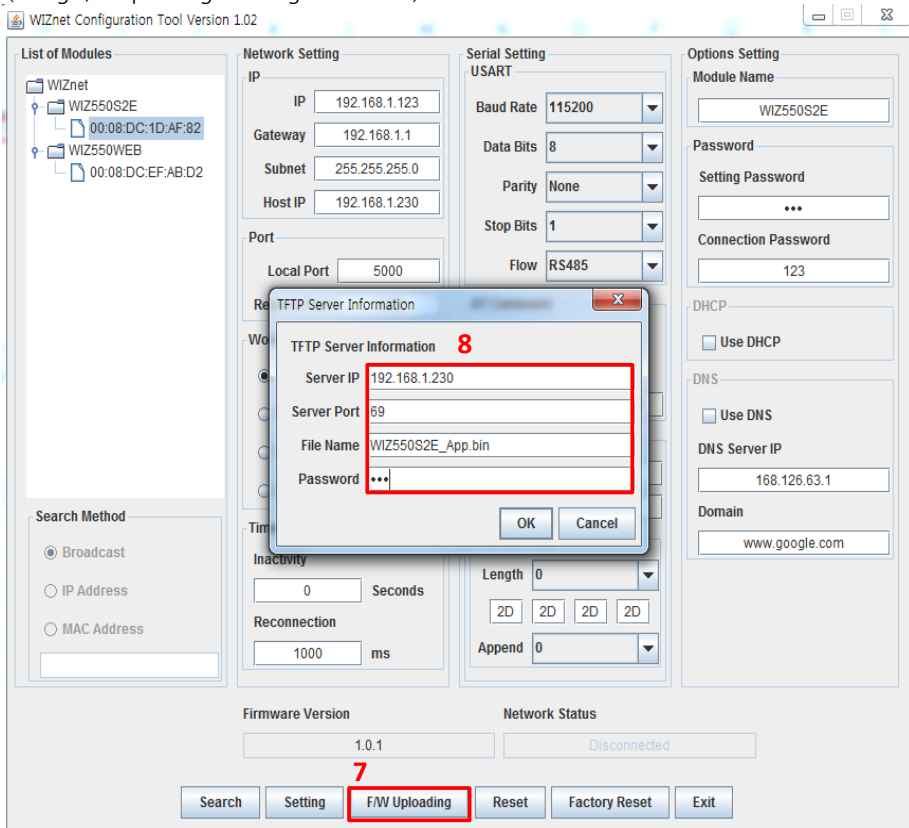
5 복사한 파일 확인 -> TFTP로 업데이트 할 때는 bin파일로 업데이트한다. (ST loader는 hex)
(Checking file -> Caution** ST loader update is hex file. And TFTP update is bin file)



6 TFTP 서버 설정 확인 한다. (69포트)
 (Checking Server Setting (69 Port setting))

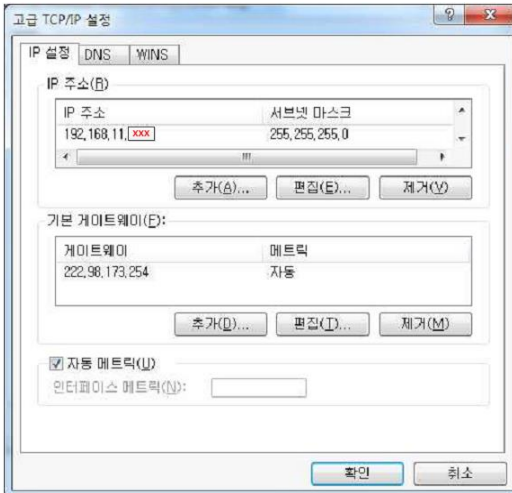


7 Configuration Tool에서 F/W Uploading 한다.
 (Doing F/W uploading in configuration Tool)



Server IP: TFTP 서버(PC의 IP)
 Server Port: TFTP 서버 포트
 File Name: 업데이트할 펌웨어 이름
 Password: Configuration tool에 세팅한 비밀번호

Server IP: TFTP Server(IP of PC)
 Server Port: TFTP Server Port
 File Name: update Firmware name
 Password: Configuration tool Setting password



고정아이피를 사용하는 PC라면,

인터넷 설정 고급에 들어가서 모듈이 가진 아이피 대역이랑 맞춘다.

모듈이 192.168.1.xxx 이라면 PC 고급에서 192.168.1.xxx를 추가

유동 아이피를 사용하는 PC 라면,

PC가 할당 받은 아이피를 검색하여 같은 대역이 되도록 모듈의 IP를 변경한다.

If you use Static IP ?

After access Advanced Internet settings, Setting ip address (the same ip address band)

ex) If module(192.168.1.xxx), It is PC setting same ip address band (192.168.1.xxx)

If you use Dynamic IP?

After search of PC ip address, change ip address (the same ip address band)