

Application Note

DHCP_DNS Example

Version 1.0.0



© 2024 WIZnet Co., Ltd. All Rights Reserved.

For more information, visit our website at <http://www.wiznet.io>

Contents

1 Introduction.....	3
2 Github Link	3
3 Applicable products	3
4 How to Test DHCP & DNS Example	3
4.1 Step 1: Prepare software	3
4.2 Step 2: Prepare hardware	3
4.3 Step 3: Setup DHCP & DNS Example.....	4
4.4 Step 4: Build	5
4.5 Step 5: Upload and Run	5
Revision history	7

Figures

FIGURE 1. USB MASS STORAGE.....	5
FIGURE 2. TERA TERM	6
FIGURE 3. TEST RESULT	6

Tables

TABLE 1. REVISION HISTORY	7
---------------------------------	---

1 Introduction

This Application Note covers the implementation of DHCP and DNS on WIZnet's TOE Chip.

2 Github Link

https://github.com/WIZnet-ioNIC/WIZnet-PICO-C/tree/main/examples/dhcp_dns

3 Applicable products

[Raspberry Pi Pico & WIZnet Ethernet HAT](#)

[W5100S-EVB-Pico](#)

[W5500-EVB-Pico](#)

[W55RP20-EVB-Pico](#)

[W5100S-EVB-Pico2](#)

[W5500-EVB-Pico2](#)

4 How to Test DHCP & DNS Example

4.1 Step 1: Prepare software

The following serial terminal program is required for DHCP & DNS example test, download and install from below link.

- [Tera Term](#)

4.2 Step 2: Prepare hardware

If you are using W5100S-EVB-Pico, W5500-EVB-Pico, W55RP20-EVB-Pico, W5100S-EVB-Pico2 or W5500-EVB-Pico2, you can skip '1. Combine...'

1. Combine WIZnet Ethernet HAT with Raspberry Pi Pico.
2. Connect ethernet cable to WIZnet Ethernet HAT, W5100S-EVB-Pico, W5500-EVB-Pico, W55RP20-EVB-Pico, W5100S-EVB-Pico2 or W5500-EVB-Pico2 ethernet port.
3. Connect Raspberry Pi Pico, W5100S-EVB-Pico or W5500-EVB-Pico to desktop or laptop using 5 pin micro USB cable. W55RP20-EVB-Pico, W5100S-EVB-Pico2 or W5500-EVB-Pico2 require a USB Type-C cable.

4.3 Step 3: Setup DHCP & DNS Example

To test the DHCP & DNS example, minor settings shall be done in code.

1. Setup SPI port and pin in 'w5x00_spi.h' in 'WIZnet-PICO-C/port/ioLibrary_Driver/' directory.

Setup the SPI interface you use.

- If you use the W5100S-EVB-Pico, W5500-EVB-Pico, W5100S-EVB-Pico2 or W5500-EVB-Pico2,

```
/* SPI */
#define SPI_PORT spi0

#define PIN_SCK 18
#define PIN_MOSI 19
#define PIN_MISO 16
#define PIN_CS 17
#define PIN_RST 20
```

- If you want to test with the DHCP & DNS example using SPI DMA, uncomment USE_SPI_DMA.

```
/* Use SPI DMA */
//#define USE_SPI_DMA // if you want to use SPI DMA, uncomment.
```

- If you use the W55RP20-EVB-Pico,

```
/* SPI */
#define USE_SPI_PIO

#define PIN_SCK 21
#define PIN_MOSI 23
#define PIN_MISO 22
#define PIN_CS 20
#define PIN_RST 25
```

2. Setup network configuration such as IP in 'w5x00_dhcp_dns.c', which is the DHCP & DNS example in 'WIZnet-PICO-C/examples/dhcp_dns/' directory.

Setup IP, other network settings to suit your network environment and whether to use DHCP.

```
/* Network */
static wiz_NetInfo g_net_info =
{
    .mac = {0x00, 0x08, 0xDC, 0x12, 0x34, 0x56}, // MAC address
    .ip = {192, 168, 11, 2}, // IP address
    .sn = {255, 255, 255, 0}, // Subnet Mask
    .gw = {192, 168, 11, 1}, // Gateway
    .dns = {8, 8, 8, 8}, // DNS server
```

```
.dhcp = NETINFO_DHCP // DHCP
enable/disable
};
```

3. Setup DNS configuration

Setup the domain name that you want to get IP in 'w5x00_dhcp_dns.c' in 'WIZnet-PICO-C/examples/dhcp_dns/' directory.

```
/* DNS */
static uint8_t g_dns_target_domain[] = "www.wiznet.io";
```

4.4 Step 4: Build

1. After completing the DHCP & DNS example configuration, click 'build' in the status bar at the bottom of Visual Studio Code or press the 'F7' button on the keyboard to build.
2. When the build is completed, 'w5x00_dhcp_dns.uf2' is generated in 'WIZnet-PICO-C/build/examples/dhcp_dns/' directory.

4.5 Step 5: Upload and Run

1. While pressing the BOOTSEL button of Raspberry Pi Pico, W5100S-EVB-Pico, W5500-EVB-Pico, W55RP20-EVB-Pico, W5100S-EVB-Pico2 or W5500-EVB-Pico2 power on the board, the USB mass storage 'RPI-RP2' is automatically mounted.

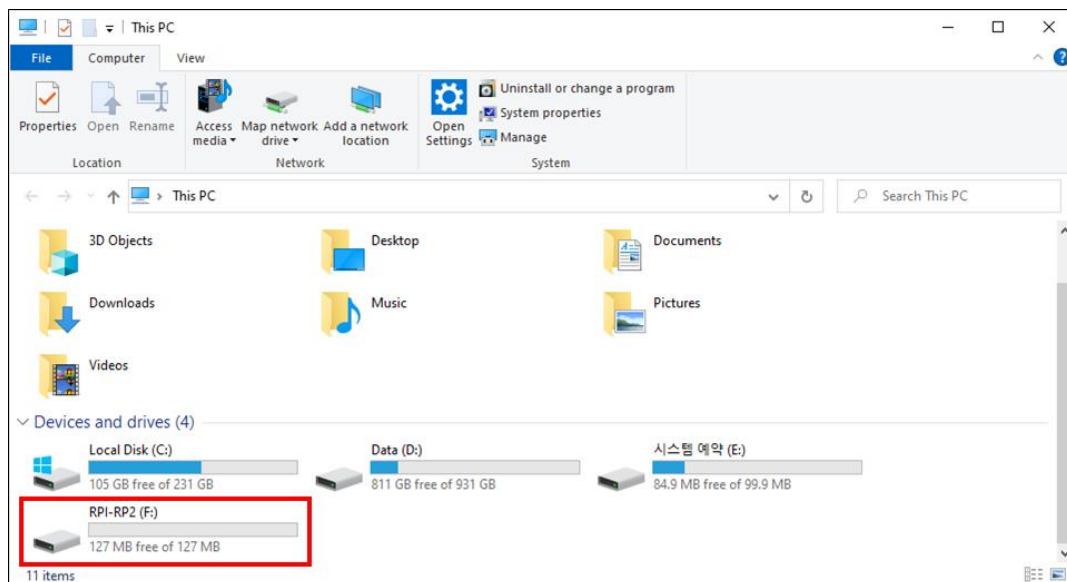


Figure 1. USB mass storage

4. Drag and drop 'w5x00_dhcp_dns.uf2' onto the USB mass storage device 'RPI-RP2'.

5. Connect to the serial COM port of Raspberry Pi Pico, W5100S-EVB-Pico, W5500-EVB-Pico, W55RP20-EVB-Pico, W5100S-EVB-Pico2 or W5500-EVB-Pico2 with Tera Term.

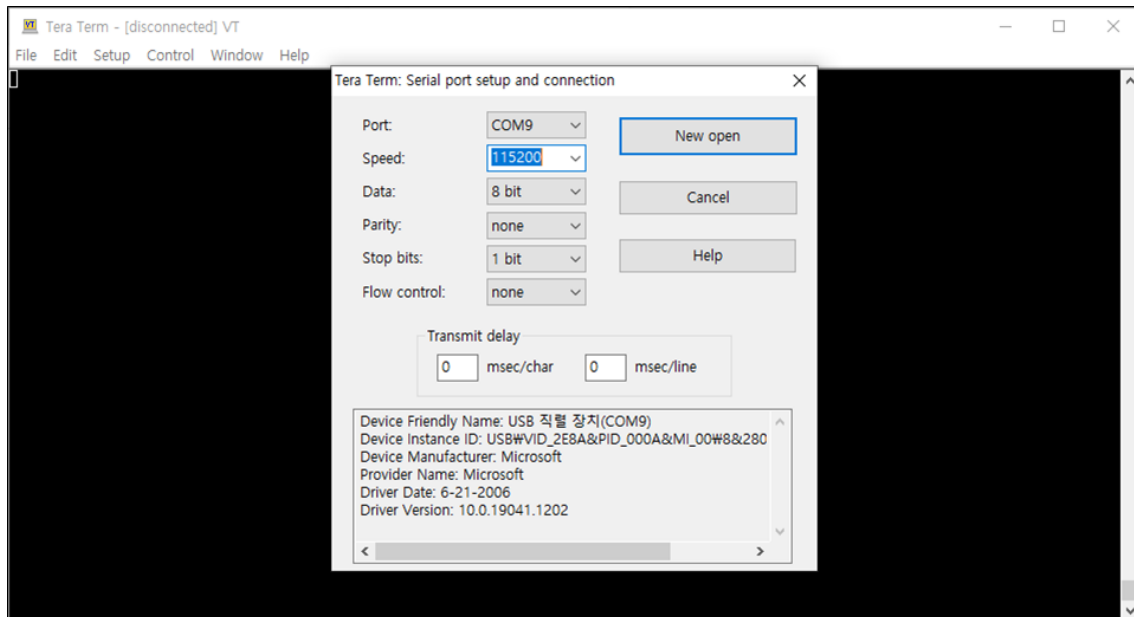


Figure 2. Tera Term

6. Reset your board.
7. If the DHCP & DNS example works normally on Raspberry Pi Pico, W5100S-EVB-Pico, W5500-EVB-Pico, W55RP20-EVB-Pico, W5100S-EVB-Pico2 or W5500-EVB-Pico2, you can see the network information, IP automatically assigned by DHCP of Raspberry Pi Pico, W5100S-EVB-Pico, W5500-EVB-Pico, W55RP20-EVB-Pico, W5100S-EVB-Pico2 or W5500-EVB-Pico2 and the IP get from the domain name.

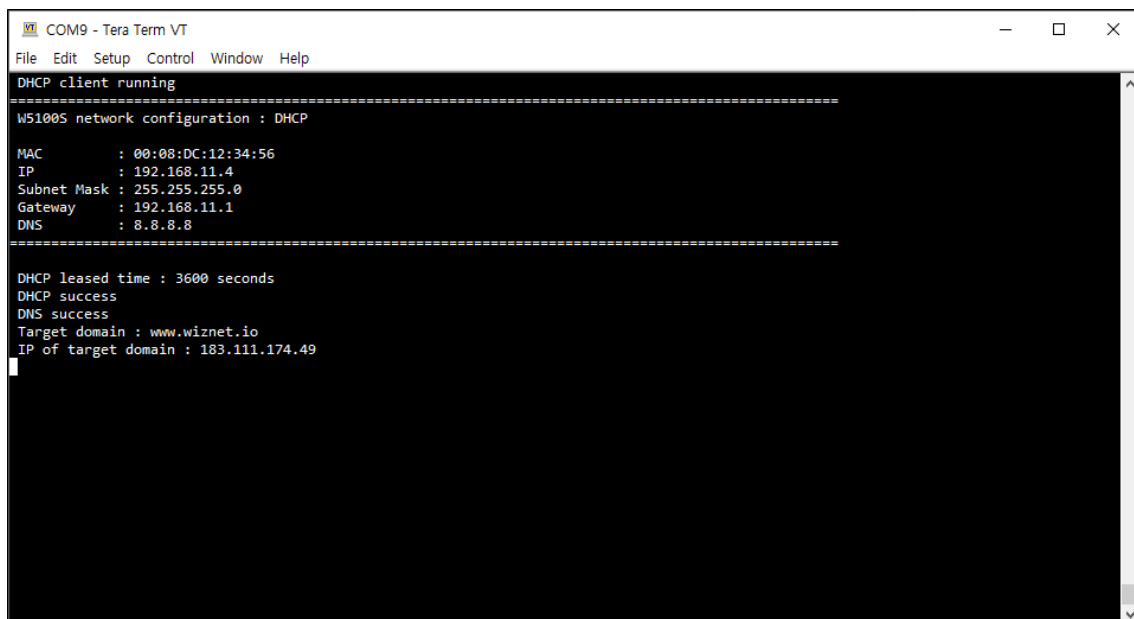


Figure 3. Test Result

Revision history

Version	Date	Descriptions
Ver. 1.0.0	Nov, 2024	Initial release.

Table 1. Revision history

Copyright Notice

Copyright 2024 WIZnet Co., Ltd. All Rights Reserved.

Technical Support: <https://forum.wiznet.io/>

Sales & Distribution: sales@wiznet.io

For more information, visit our website at <https://www.wiznet.io/>